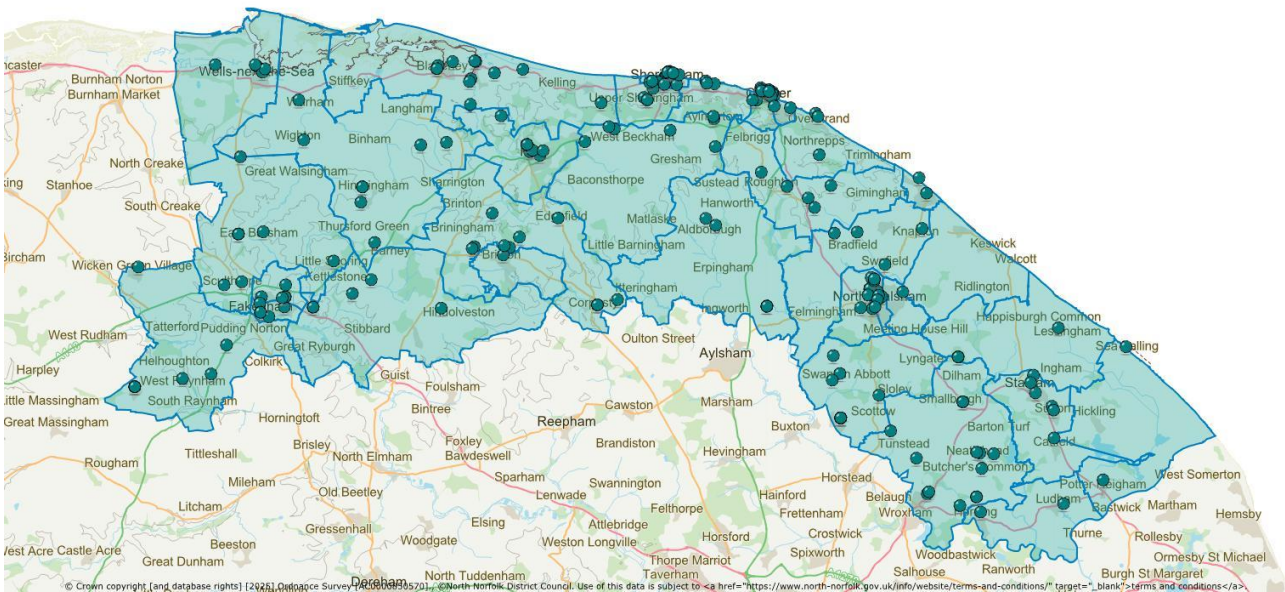


## Appendix 7

<b>Local Investment Priority Programme</b>	- Support for businesses - Business Advice and support
<b>Delivery Partner</b>	- Growth Hub (laterally part of Norfolk County Council)
<b>Timescale</b>	- 2-year programme 2023/24, 2024/25
<b>Funding</b>	- £247,127
<b>Outcomes</b>	- 167 businesses supported
<b>Added value</b>	- demand for support continued to be high and this scheme leveraged in support for an additional 46 businesses (to date) receiving over 81 hours of support.

### Geographical Spread of delivery



### North Norfolk supported businesses

Sum of Hours
Business Name
About with Friends
Adam Griggs
Air Water Fish Ltd
Aldborough & Thurgarton Parish Council
Alice Rose
All the Raj Ltd
Alpha Chase Engineering Services Limited
Anita Fortes

Annie Nickerson
Antony Flint
Archer Engineering Limited
Asteroceras Group Ltd
AttoLife Ltd
AttoSure Ltd
Barling Vintage and Retro
Barn Drift
Bella Escapes Limited
Bindwell Limited
Bird - Ventures Limited
Birdie Fortescue Ltd
Black Shuck Ltd
Bradfield Bespoke Ltd
Brale Ltd
Bramble Lodge
Briston Pub Co Ltd
Burnt Fen Alpacas
CA Seafoods (NORFOLK) Ltd
Carey Garden Design Studio LLP
Carl Bowers
Caro Scott
Cathy Cookson
Chelsea Dugdale
Chemanglia Limited
Chestnut Barn
Chris Bedford
Chris Taylor Photo (Norfolk) LTD
Cocoa Collective Chocolatiers Ltd
Coffeesmiths Limited
Colby and Banningham Parish Council
Conservation Shop Limited(The)
Cromer Artspace CIO
Cromer Community Association CIO
Cromer Community Shed
Cromer Lawn Tennis & Squash Club
Cromer Trophies & Engraving Limited
David Holliday Limited
David Robinson
Debbie Allan
Dick Seaman Farms Limited
Drurys Vehicle Services Ltd
Duetrade Software Ltd
Dunhams Washroom Systems Ltd
East Anglian Cruising Club
Emily Mitchell
Emmy Rolph
Everything Outdoor Ltd

Fakenham Fairways
Fakenham Sports Centre Association Limited
Fakenham Town Council
Fast Eddy's Performance Car Specialists
Fat Teds StrEAT Food Limited
Fen Spirits Limited
Fortify247 Ltd
Friary Farm Caravan Park
Friends of Cromer Museum
Gayle Deary
GB Nexus Ltd
Ginger&Juice Ltd
GLF Steel Limited
Green Park Rural Centre
Greenhill Renovation Ltd
Grice and Foster Events Ltd
Henry Cushing and Maureen Cushing
Herbert Graves (Briston) Limited
Independence16 Ltd
Instro AI Solutions Limited
J.F.Temple & Son Limited
Jac Slaney
James Goodley
James Runciman
Josh Willis
Julian Emens
Julie Chalmers
Julie Hewes
K & D Ellis Limited
Katherine Truss
Kelling Heath Holiday Park Limited
Kemp Retail Ltd
Kevin Smith
Langham Dairy Ltd
LY Copywriting Ltd.
Lynda Tucker
Making My Grass Greener Ltd
Megan Carter
Morton's Event Hire Ltd
Naked Manufacturing Group Holdings Limited
Nelson County Catering
New Life Community Church North Walsham
New Stages Projects CIC
Newnham Structures Ltd
Norfolk Adventure Limited
Norfolk Holiday Cottages & All the Raj Ltd
Norfolk Prints Ltd
Norfolk Seaweed Ltd

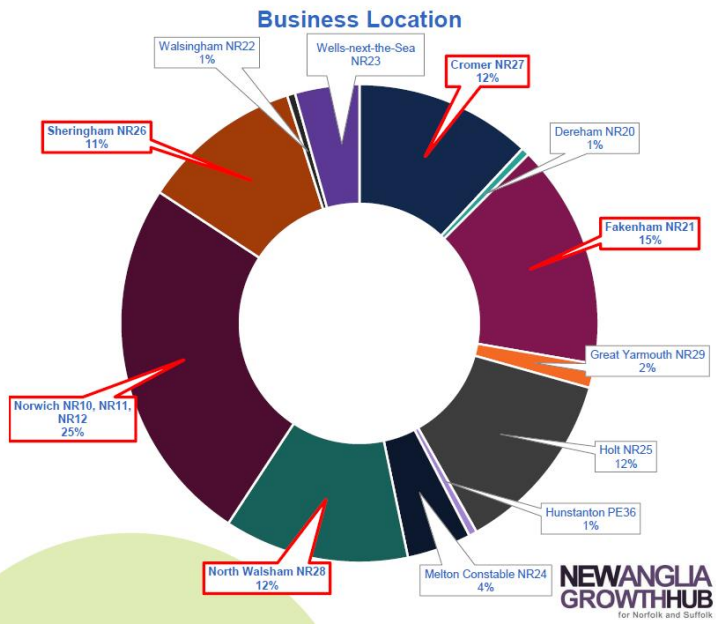
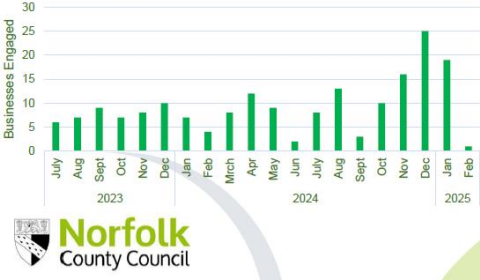
Norfolk's Finest Limited
North Norfolk Coastal Cottages Ltd
North Norfolk Community Transport
North Norfolk Railway Public Limited Company
North Walsham and Dilham Canal Trust
North Walsham Rugby Football Club Limited
Onkk Limited
Orchard Farm Estates (Counties) Ltd
Owners Websites
P55 Ltd
Patricia Leanne McColm
Phillip Swash
R C A Bank Limited
Real Hospitality Ltd
Richard Barden
Richardsons Leisure Limited
Roman Camp Inn
Royal Cromer Golf Club
RubberDuckySnacks Limited
Sandcliff Guest House
Serena Woolliams
Sheringham Museum Norfolk Trust Ltd
Sheringham Salt
Sheringham Woodfields School
Simon Hibberd
Smiths Mechanical Support Limited
Somewhere Random Ltd.
Space
Sponge Cakes Ltd
Stella Sheldon
Stody Estate Limited
Strand Development Limited
Stuart Morton
Summer Clarke
Sunnyholme Enterprises Limited
Swift Aircraft Limited
Tavern Tasty Meats Ltd
Tay Trading Ltd
The Barns at Thorpe Market
The Barsham Brewery Ltd
The Crazy Cow
The Gurney Farm Partnership
The Homeopathic Supply Company Limited
The London Beer Factory Ltd
The Nancy Oldfield Trust Limited
The Norfolk and Suffolk Broads Charitable Trust
The Parochial Church Council for the Ecclesiastical Parish of North Walsham
The Pensthorpe Conservation Trust Limited

Tim & Dawn Duffy
TJR Electrical & Renewables Ltd
Tree Top View Sheringham
Tuesday Simmonds
Veronica Zappia
ViridiPath LTD
Wells Maltings Trust
Wildcraft Brewery Limited
Will Trust of the 7th Marquess Townshend of Raynham
Winibeas Bakery Ltd
Worstead Farms Ltd
Yarmouth Greyhound Homefinders
Yesu
<b>Grand Total</b>

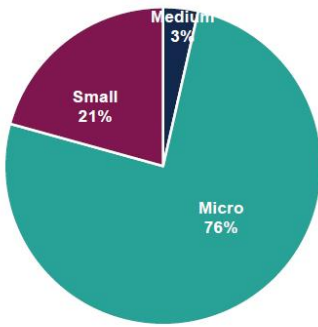
**Additional Data**

**Post Code Split**

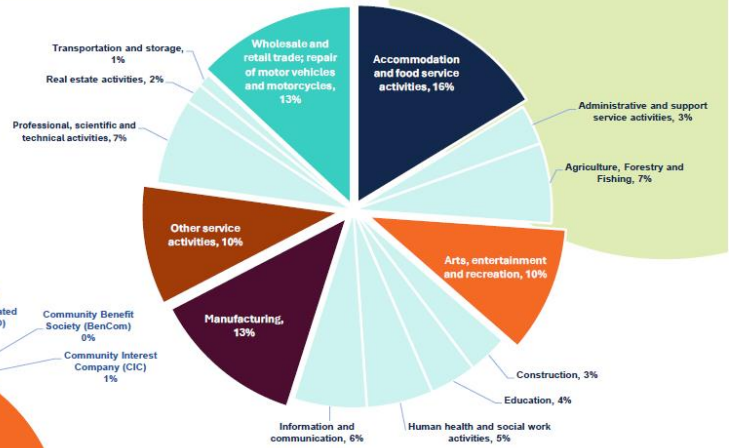
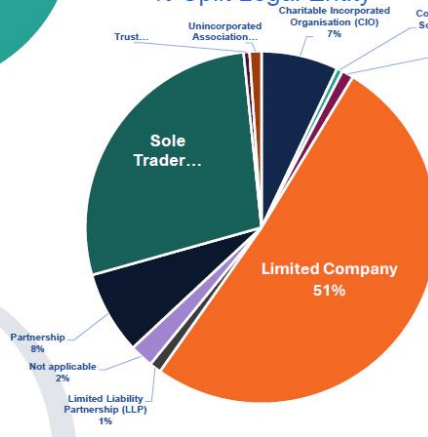
- Norwich: 46
- Fakenham: 28
- Holt: 23
- North Walsham: 23
- Sheringham: 20



## % Split Business Size



## % Split Legal Entity



### Key Sectors:

1. Accommodation/ Food Services
2. Wholesale/ Retail Trade
3. Manufacturing
4. Arts/ Entertainment/ Other Services

## Case Studies and feedback

"I recently attended a sales training session and I am thoroughly impressed."

"It was incredibly beneficial to us, as an SME getting into online marketing. Very friendly and approachable."

"Great course yesterday - the course was AI in marketing. I learnt a lot, there's lots to learn. Highly recommend the course."

"The level of provision was outstanding, with well-structured content and a highly knowledgeable facilitator. The fact that this session was offered free only adds to its value. I highly recommend their services to anyone looking to grow their business – it was definitely worth it!"